

# LOGO PLACEMENT DIAGRAM

## RIDER SUIT

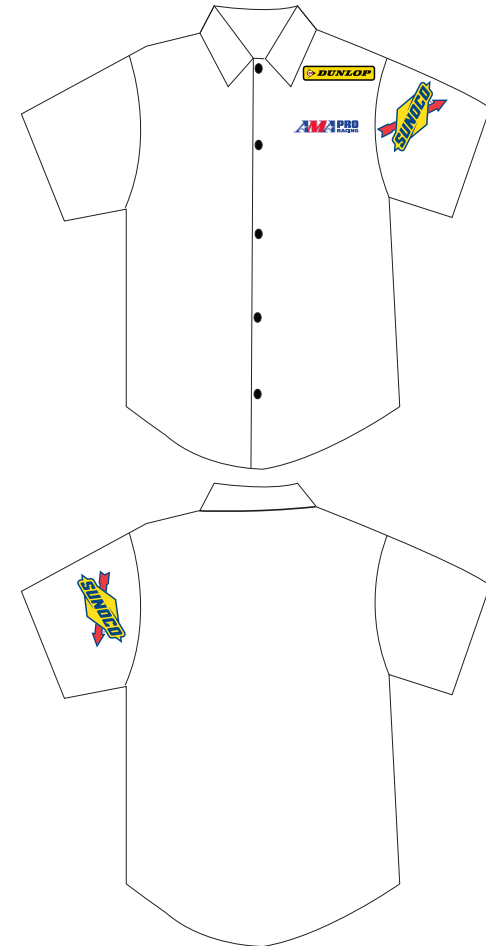
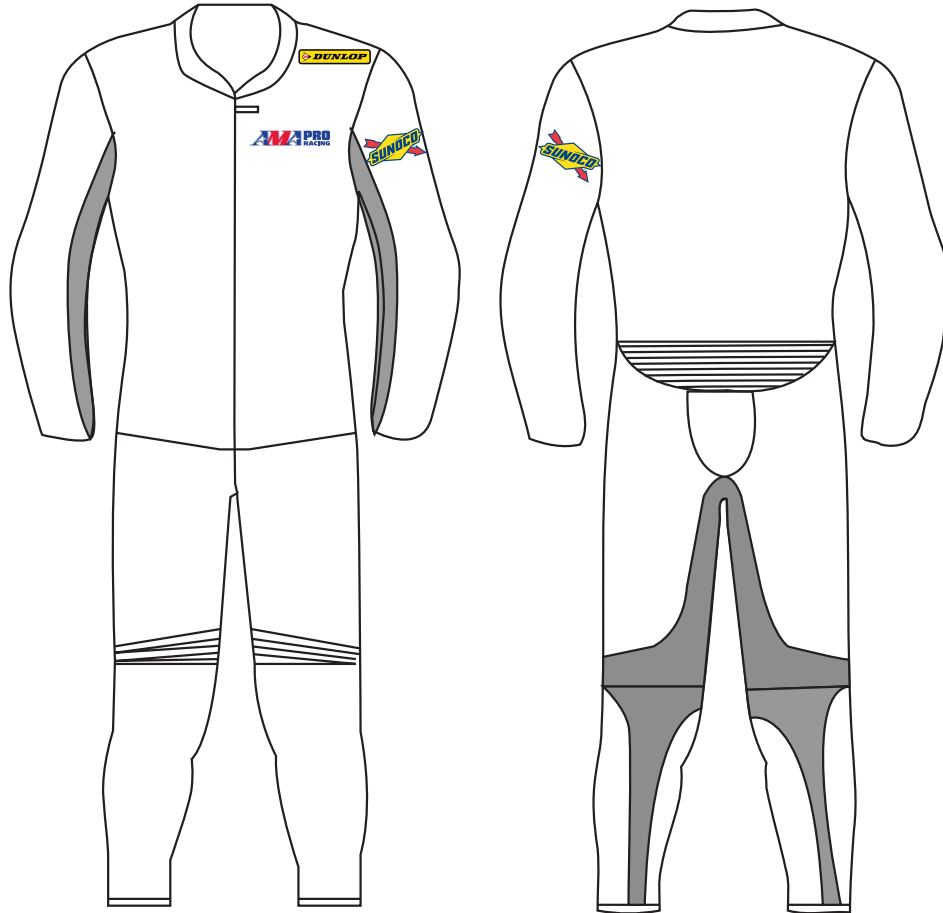
## CREW SHIRT

LOGOS THAT ARE FOR CONTINGENCY/YEAR-END POINT FUND PURPOSES ARE REQUIRED FOR AWARD PAYMENT

**AMA Pro Racing:** Left chest (GNC1 and GNC2 riders)

**Sunoco:** Centered on left sleeve (GNC1 and GNC2 riders)

**Dunlop:** Upper shoulder area, chest or right/left sleeve (GNC1 and GNC2 riders)



Logos are available for download on [amaproracing.com/competition](http://amaproracing.com/competition) for competitors looking to have custom crew shirts & leather suits embroidered/screen printed. There are two types of AMA Pro Racing logos (woven and plastic) The woven patch is for crew shirts. The plastic is for leathers. We highly recommend taking your suit/crew shirts/motocross gear to a professional to have your patches sewn on or iron-ons heat pressed. Please call 386-492-1014 if you have any questions.